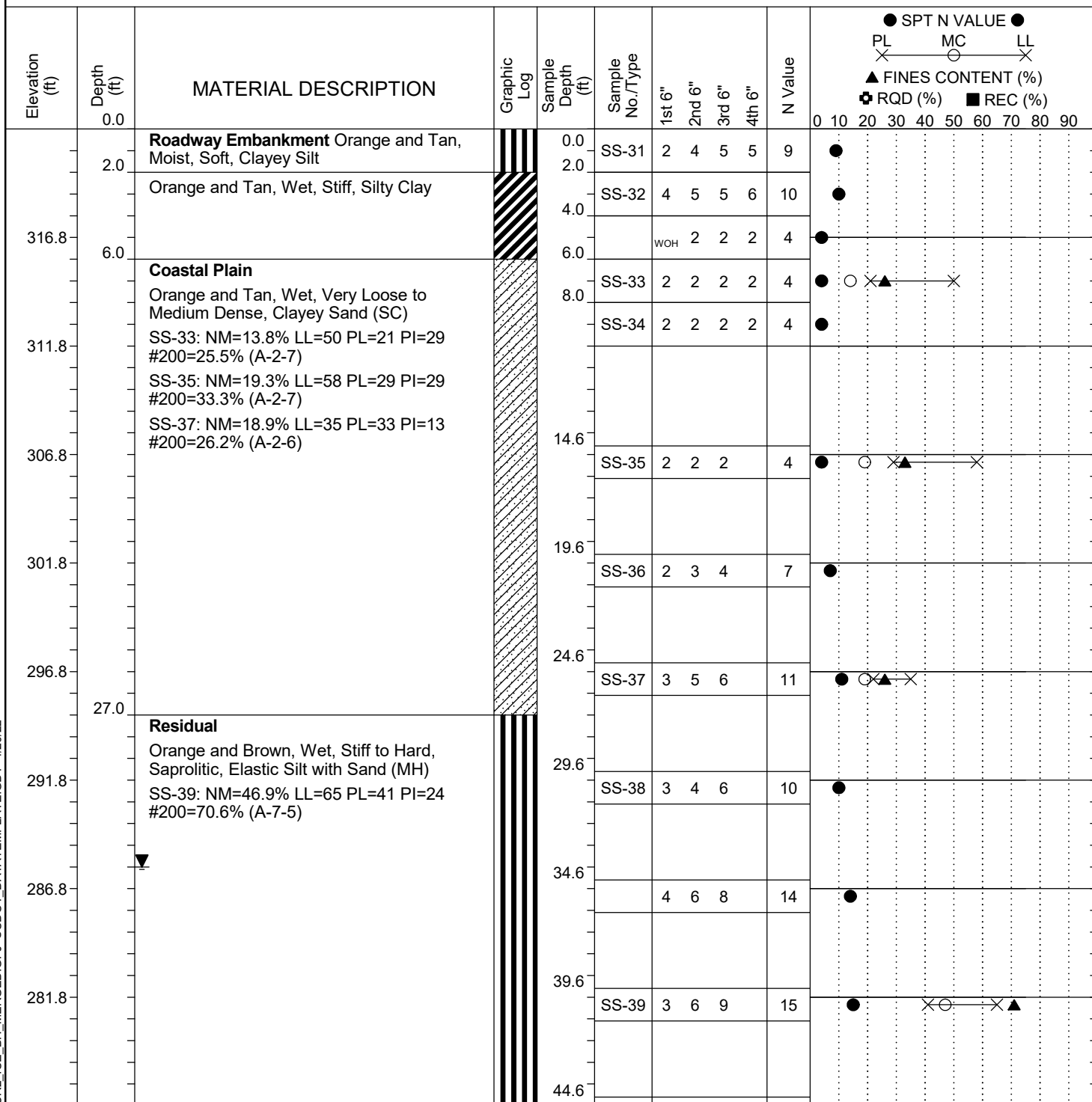


Project ID:	P039719	County:	Richland	Boring No.:	G-127
Site Description:	Carolina Crossroads Phase 2 - Bridge 42B			Route:	Broad River Rd.
Eng./Geo.:	C. McIlroy	Boring Location:	204+24	Offset:	116 RT
Elev.:	321.8 ft	Latitude:	34.03926754	Longitude:	-81.09317171
Total Depth:	81.1 ft	Soil Depth:	81.1 ft	Date Started:	3/1/2022
Core Depth:	N/A ft	Date Completed:	3/2/2022		
Bore Hole Diameter (in):	2.25	Sampler Configuration		Liner Required:	Y (N)
Drill Machine:	D-50 #435	Drill Method:	Casing w/ Adv	Hammer Type:	Automatic
Core Size:	N/A	Driller:	M. Morgan	Energy Ratio:	84.4%
		Groundwater:	TOB	N/A	24HR
					34 ft



LEGEND

Continued Next Page

SC_DOT 20-01_CCR2_ICE_BH_MERGED.GPJ SCDOT_DATATEMPLATE.GDT 4/20/22

SAMPLER TYPE		DRILLING METHOD	
SS	- Split Spoon	HSA	- Hollow Stem Auger
UD	- Undisturbed Sample	CFA	- Continuous Flight Augers
AWG	- Rock Core, 1-1/8"	DC	- Driving Casing
NQ	- Rock Core, 1-7/8"	RW	- Rotary Wash
CU	- Cuttings	RC	- Rock Core
CT	- Continuous Tube		